



FOR IMMEDIATE RELEASE
January 5, 2016
Contact: Mike Saucier, Soss Communications
msaucier@gmail.com | 347-834-7476

UPCOMING AT THE ARTWALK

Presented by Scottsdale Gallery Association

Hundreds of Artworks to Browse or Buy, Live Music, New Gifts, Artist Receptions, Live Demonstrations, Food Sampling, Wine Sipping

SCOTTSDALE, AZ – Make room for some vroom along the streets of the ArtWalk.

The Scottsdale ArtWalk, presented by the Scottsdale Gallery Association, is gearing up for this Saturday, January 9, for its special ArtWalk, Art on the Asphalt, from noon to 4pm. A mix of working artists and cool, collectible cars will exhibit along the ArtWalk blocks and '50s and '60s music will fill the air, along with other musical entertainment. For example, On the Edge Gallery and Xanadu Gallery, among others, are hosting special events. See more in the upcoming section.

Featured as always will be local, national and international art at galleries in the heart of Scottsdale. Look for the blue "ArtWalk the Line" insignia on sidewalks along Main Street and Marshall Way for participating venues.

Ahead is a glimpse of some of the artworks on display for this special ArtWalk. Below left: "62" and "California Day," by Bill Colt will be featured at Wilde Meyer Gallery. "Gullwing" below at right, by Peregrine Heathcote, will be featured at Bonner David Galleries.



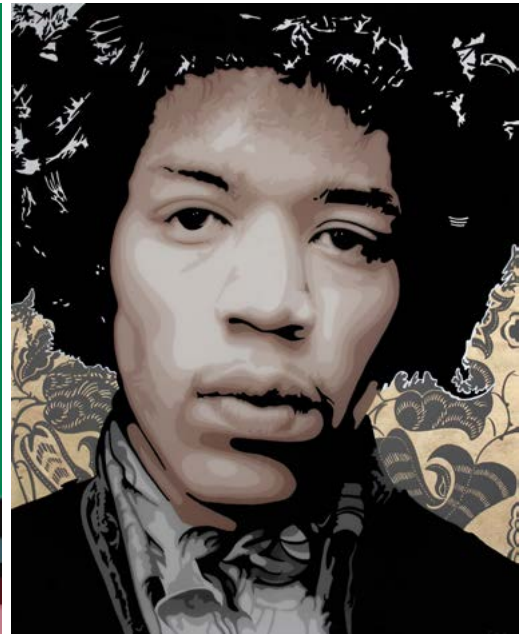
THIS WEEK AND BEYOND



JANUARY 7

Calvin Charles Gallery *4201 North Marshall Way*

Hosts opening reception for solo exhibition "Romancing History" by artist Elisabetta Fantone on January 7 from 6:30-9:30pm. Wine and hors d'oeuvres to be served. Exhibition showing until February 2. Fantone's collection of celebrity-inspired portraits is a "unique perspective on influential pop culture familiar faces interpreted through carefully orchestrated paint strokes and lively, vibrant colors." Below: Fantone's "Elizabeth Taylor" and "Jimi Hendrix"



Wilde Meyer Gallery *4142 N. Marshall Way*

"Art to Acquire" opens January 7, with a reception on January 28 from 7-9pm. On display will be some of the gallery's most collectible artists including Linda Carter Holman, Sherri Belassen, Amy Watts and Suzanne Betts. Below left: Watts's "Wild Cow Catcher"; below right: Betts's "Promising"



Wilde Meyer Annex

Opening at the Wilde Meyer Annex on January 7 in conjunction with the Art on the Asphalt ArtWalk is "Imagine That" – at which the gallery will be presenting some of their most collected and imaginative artists' works. Included in the show are: Stephen Morath, Chaille Trevor, Debora Stewart, Ron Russon, and several other artists. A reception will be on January 28. Below left: "Like Father, Like Son" by Sushe Felix; below right: "With the Herd" by Samantha Butler



JANUARY 9

Art on the Asphalt ArtWalk

On the Edge Gallery

7050 E. 5th Ave.

Artist demonstrations, drinks and food from noon to 4pm on January 9 during the "Art on the Asphalt" ArtWalk and featuring a lineup of featured artists on hand either to demonstrate or discuss how they create their artwork, including photographer and painter Frank Biondo, who combines his love for both to create art that embodies both disciplines. Oil painter E.A. Hain-Meranto will also be on hand to feature her interpretive landscapes in oil that convey her impression of desert beauty. Below: Biondo's works and Hain-Meranto's landscape



Xanadu Gallery

7039 E. Main St. #101

Featuring Route 66, classic car-themed collages by popular artist Dave Newman during "Art on the Asphalt" from 12-4 pm. Also featured: unique, rusted car photography by Jeff Settle and Detroit-inspired paintings by David Mills. In addition to these works, oil artist John Horejs will do a painting demonstration on the sidewalk in front of the gallery. Below: Newman's "Follow the Arrows"; Settle's "1929 Ford Model A #1"; and "Rust In Peace No. 13" by Mills.



JANUARY 11

Altamira Fine Art

7038 E. Main St.

Los Angeles artist Robert Townsend makes his Scottsdale debut with his "Dreamland" exhibit opening January 11. There is an artist reception on Thursday, January 14, 6-9pm, with live music, refreshments and a fun, vintage vibe. Townshend, a pop-photo realist, will feature watercolor and oil paintings ranging from 2 x24 to 60x60 inches. His pop-photo realist style and vibrant color are perfectly matched with eye-catching subject matter including retro candy bars, cakes and pies, and a larger-than-life wall clock. Below: Townshend's "Just Kay and Patty!"



JANUARY 21

Xanadu Gallery

7039 E. Main St. #101

New mixed-media collage art by Dave Newman will be featured in Xanadu Gallery's exhibit "American Pop Revisited-Dave Newman 2016." The show opens with an artist's reception during the ArtWalk from 7-9pm on Thursday, January 21, with music by Pat Roberts and the Heymakers. The exhibit will feature Route 66, Native American, and nostalgic Americana themes. Closes February 16. Below: Newman's "Matchbook Chief"



JANUARY 23

The Signature Gallery

7177 E. Main St.

Celebrating from 4pm-7pm on January 23 the Pabst family of artists – Charles, Cara and Michael -- with "A Family Legacy" show, with new artwork, live music and light refreshments. The year 2014 marked the 50th year of painting for renowned artist, Charles Pabst, who sold his first painting at the age of 14. Charles, his daughter Cara, and son Michael will be on hand to showcase new works of art, sign books, and meet with collectors. Family adventures and explorations of nature and the great Southwest provided the greatest source of inspiration for paintings that are filled with luminous light and brilliant color. The trio will be in house to display their newest collections of work, including "Desert Moon" featured below, left. Below right, the Pabst family.



JANUARY 24

Carstens Fine Art Studio & Gallery

7077 E. Main Street #5

Presents "Sinfonietta A Show of New Miniature Paintings" on January 24 from 7 to 9pm, with live music by flutist Sherry Finzer and catering by Café Forte of Scottsdale. Wine will be served.

JANUARY 25

Altamira Fine Art

7038 E. Main St.

The work of Denver-based artist Duke Beardsley will be shown at his third annual one-man show -- "Of A Wide County A'Horseback" -- during an ArtWalk reception at the gallery on January 25 from 6-9pm with wine, hors d'oeuvres and live music. The show will feature oil paintings in sizes ranging from 12x36 to 72x60 inches. A fifth-generation Coloradan, Beardley's western roots run deep and his art reflects those roots. His working cowboy images are rendered in a clever minimalist approach and presented in palettes that lend a pop art sensibility. Below: Beardley's "San Pancho"



JANUARY 28

On the Edge Gallery

7050 E. 5th Ave.

Featured artists E.A. Hain-Meranto, Valerie Hildebrand and Katie Stearns will be on site discussing or demonstrating their creative processes at On the Edge Gallery on January 28 from 6-9pm during the ArtWalk. The gallery is spotlighting and celebrating contemporary classical and representational artwork. Below: Hain-Meranto's desert interpretation, Hildebrand's "Black Holes Squared" and Stearns's "Best Friends"



FEBRUARY 4

Calvin Charles Gallery 4201 North Marshall Way

Calvin Charles Gallery will host a reception on February 4 from 6:30-9:30pm for a solo show -- "Awakened Soul" -- by artist Stephanie Paige. The exhibition will continue through Tuesday, March 1. Below: Paige's "Moon Child"



Wilde Meyer Gallery 4142 N. Marshall Way

At Wilde Meyer Gallery, "Cowboys, Indians, Landscapes, and More" opens February 4, with 7-9pm receptions on February 18 and on March 3. Show includes Thom Ross, Jim Nelson, Patrick Coffaro, Carol Spielman, Sherri Belassen, Lance Green, Carol Ruff Franza, and more. Below left, Belassen's "Ranchero"; below right: Greg Dye's "Great Wide Open"



FEBRUARY 18

Wilde Meyer Gallery 4142 N. Marshall Way

The Wilde Meyer Gallery opens "The West – Not All Cowboys and Cacti" on February 4 and hosts a reception on February 18 from 7-9pm and another on March 3, same time. This show explores the use of traditional subjects handled in a very contemporary way. Artists include subjects of landscapes, flora, fauna, and abstracts. Artists in the show include Jim Nelson, AM Stockhill, Lance Green, Jill Gilbert, and others. Below left: Stockhill's "The Days Gone By"; below right is Ryan Hale's "Elements of Nature"



MARCH 3

GOLD PALETTE ARTWALK SERIES

New West ArtWalk

This new event, on March 3 from 6:30-9:30pm, combines the Native and Western ArtWalks on the calendar. It's a unique event that takes on the spectrum of Western and Native arts and will celebrate Scottsdale's new Museum of the West and the City's native cultural heritage. Native American and Western entertainers will perform along the ArtWalk line along with performances and Western storytelling at the Museum of the West theatre. Partners for the event include the Museum of the West, Heard Museum and City of Scottsdale.

Wilde Meyer Gallery 4142 N. Marshall Way

Wilde Meyer Gallery will host an opening reception for "Tradition, Imagination, and Out There – Contrasts in Styles" on March 3 in conjunction with the New West ArtWalk. Featured will be work by Jaime Ellsworth, Ryan Hale, and Sarah Webber, who each bring a different concept in painting to this show. Webber's paintings are rooted in a traditional painting style, while Ellsworth places her fanciful subjects in imaginary places. Hale's work is mostly conceptual, inviting viewers to reach conclusions on their own. Closing April 2. Below, Webber's "Don't Worry Be Happy"; Hale's "Thoughts at Dusk"; and Ellsworth's "Pack."



Wilde Meyer Annex

Also opening in conjunction with the New West ArtWalk on March 3 at the Wilde Meyer Annex will be "The Equine in Art." The Equine image in art is used in many ways. Sometimes it is the main subject, sometimes it is used in a supporting role to tell a story. Closing April 2. Shown below, left: Karen Bezuidenhout's "Moon Rider" and (right) Chaille Trevor's "Mares and Clouds"



Calvin Charles Gallery

4201 North Marshall Way

Calvin Charles Gallery will host an opening reception for a solo show by artist Jennyfer Stratman -- "Cultivating the Wild" -- during the New West ArtWalk on March 3, from 6:30-9:30pm, an exhibition of cast bronze and mixed media that showcases a mastery of sculptural techniques. Closing April 5. Below: Stratman's "She Knew She Was a Tree"



APRIL 7

GOLD PALETTE ARTWALK SERIES

Video ArtWalk

This new event, on April 7 from 6:30-9:30pm, replaces Spring Into the Arts ArtWalk on the calendar. The ArtWalk will present a popular new trend in the visual arts with video artworks. Images and shows will be displayed on the exterior walls of buildings, in vacant storefronts and in galleries. Pop street musicians and entertainers will perform along the ArtWalk line to capture the new age of visual and performance mediums. Partners include the City of Scottsdale and the Scottsdale Museum of Contemporary Art.

Calvin Charles Gallery

4201 North Marshall Way

Calvin Charles Gallery will host an opening reception for a solo show by artist Christian Dore – “Into the Wild” – during the Video ArtWalk on April 7 from 6:30-9:30pm. Dore’s work explores the impressions of the lush environment around him and he takes the expressive qualities of color and mixes them with a somewhat whimsical narrative to capture his feelings. Closing May 5.



JULY 7

GOLD PALETTE ARTWALK SERIES

International ArtWalk

This event, on July 7 from 6:30-9:30pm, replaces the Summer Spectacular ArtWalk on the calendar and celebrates the many fine artworks represented in Scottsdale galleries from artists and images around the world. The ArtWalk will host a series of small presentations and lectures on a variety of topics from a global perspective. To cool off on the ArtWalk line, cool treats, from Asian shaved ice to Italian gelato, will be served. Partners include ASU Art Department and international artists.

SPECIAL FEATURES ALONG OR NEAR THE ARTWALK

Copper Leaf Gastrolounge

4225 N. Craftsman Ct.

Thirsty Scottsdale ArtWalkers can stop by the Copper Leaf Gastrolounge for the ArtWalk special: a \$4 moonshine cocktail or 20% off of the food and beverage tab!

ABOUT THE SCOTTSDALE ARTWALK

Scottsdale was the first city in the U.S. – 41 years ago – to start a weekly ArtWalk, an event that is now a cultural tradition in the city. It's even been named by Art Walk News website as "The Mother of All Artwalks."

The member galleries of the Scottsdale Gallery Association are dedicated to exhibiting the finest visual art from all over the world by offering a dazzling and diverse array of work in a wide variety of media. Members strive to make art accessible to all, from the serious art collector to the casual art appreciator.

At receptions, openings and demonstrations, artists get to show off their work and discuss what went into creating them. Works range from Western traditional to cutting-edge contemporary.

Art and strolling can generate an appetite. Luckily, food samples from local restaurants abound and some of the galleries provide drinks, cheeses, crackers and chocolates.

Local and tourist ArtWalk strollers may bump into a new show opening, an artist demonstration or an offer of a new food sampling. ArtWalk-ing can be the part of a date night that includes dining at one of several restaurants or capping off the night at a downtown bar with a drink. A horse-drawn carriage ride awaits for those wanting to browse in style and the Scottsdale Trolley operates in the area.

For more information on this event, galleries and the ArtWalk, go to www.scottsdalegalleries.com.